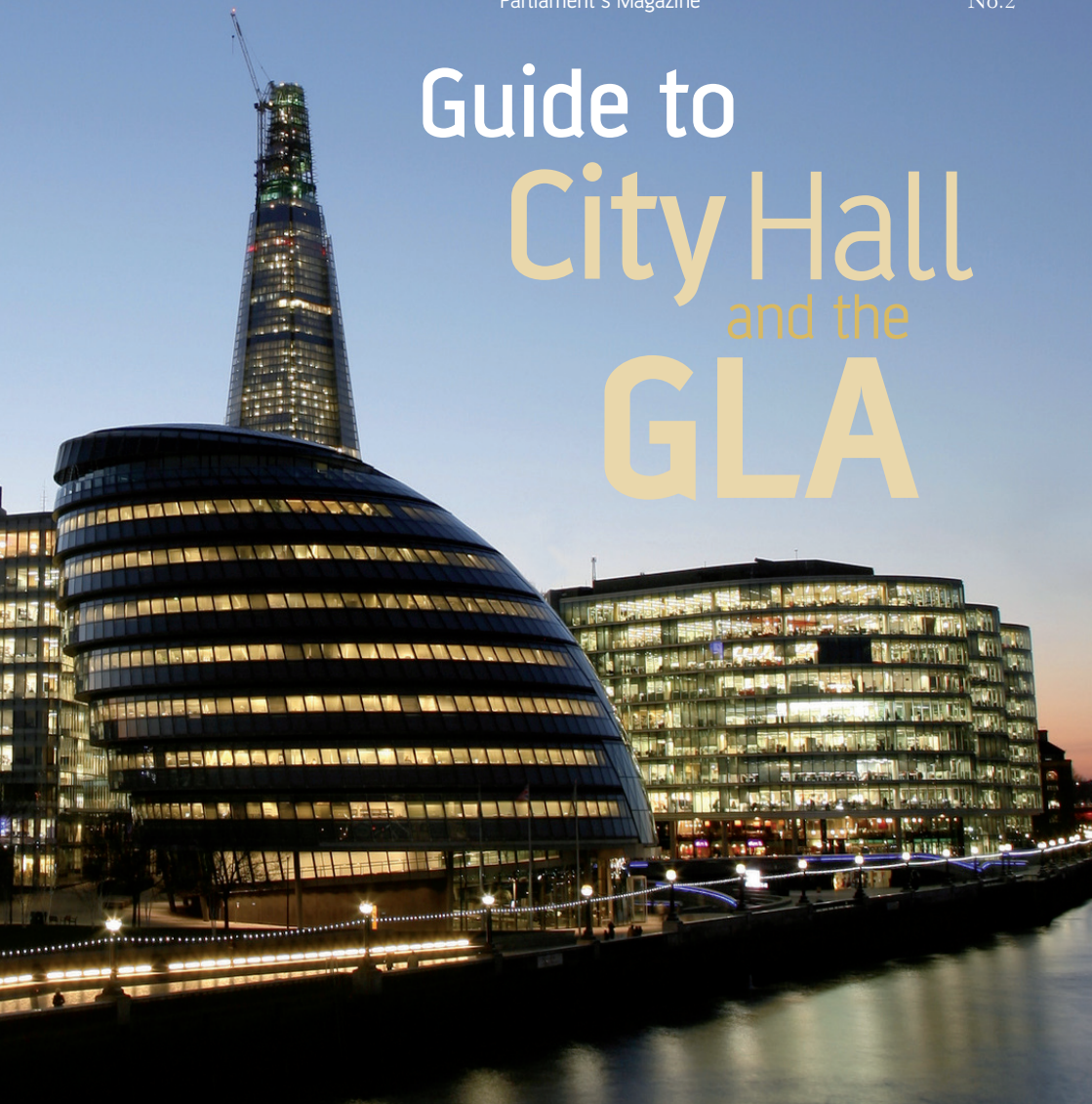


THE HOUSE

Parliament's Magazine

No.2

Guide to City Hall and the GLA



In association with

Protecting customers today and long into the future

Over 300 years of history

Aviva Group companies have been insurance pioneers in the UK for more than 300 years and have been involved in many aspects of British life and significant events during this period, from insuring Queen Victoria to settling claims after the Great Train Robbery.

We have had many famous customers over the years, including:

- **Robert Walpole** - In 1710, Aviva's fore-runner, the Hand in Hand Fire and Life Insurance Society insured the house of Robert Walpole, who would become Britain's first prime minister.
- **Sir Winston Churchill** - who in 1896, took out a personal accident policy. The annual premium of £6 14s (£6.70) included risks from steeple chasing and other forms of racing.
In 1958 the directors of the company wrote to Sir Winston informing him that this was the oldest personal accident policy on the company's books, and would be free of further premium payments.
- **John F Kennedy** - General Accident provided motor insurance for the Kennedy family until 1972 including President John F Kennedy.

A Sustainable Business

Today, Aviva's purpose is to provide prosperity and peace of mind to our 43 million customers across the world – including 14 million in the UK.

We help people to save for retirement, and to insure themselves against the risks they face. We often have relationships with our customers for many decades, so we need to ensure that Aviva is sustainable over those years to be there for those customers when they need us.

We are proud to be in the top 10% of sustainable companies globally

Source: DJSI

Developing communities – Street to School

Our customers take out policies to look after themselves and their families but sadly many street children often have no-one to protect and care for them in the same way.

Aviva Street to School is our charitable programme through which we're championing the needs of street children in our communities.

In the UK, working with our charity partner, Railway Children, we aim to educate children on the dangers of running away. We are also supporting children who are already on the streets. Ultimately, we want to give them a real chance of long-term prosperity and peace of mind.

For more information about our Street to School programme and runaways in your area, please email public.policy@aviva.com

Globally, we have a five-year goal to help 500,000 children off the street and back into education by 2015.



AVIVA

THEHOUSE

The House Supplement No.2 June 2012

www.politicshome.com

editorial@housemag.co.uk

PUBLISHER

Gerry Murray

POLITICAL EDITOR

Sam Macrory

DODS PARLIAMENTARY EDITOR

IN CHIEF

Paul Waugh

PARLIAMENTARY EDITOR,

POLITICS HOME

Tony Grey

COMMISSIONING AND SPECIAL

PROJECTS EDITOR

Sally Dawson

HEAD OF PRODUCTION

John Levers

DESIGN

Charlotte O'Neill

Matt Tittley

Max Dubiel

ASSEMBLY MEMBER PHOTO

CREDIT

Hayley Madden

ADVERTISING

Sam Webber

Dominic Stonecki

ADVERTISING MANAGER

Lenny Rolles

COMMERCIAL DEVELOPMENT

DIRECTOR

Rob Ellis

MANAGING DIRECTOR

Philip Eisenhart

The House Magazine

21 Dartmouth Street, London,

SW1H 9BP

EDITORIAL

editorial@housemag.co.uk

Tel 020 7593 5664

ADVERTISING

housemagazinesales2

@dods.co.uk

Tel 07585306266

SUBSCRIPTIONS

Tel 020 8955 7007

Dodssubs@alliance-media.co.uk

Dods subs

PO Box 2068

Bushey

Herts, WD23 3ZF

ANNUAL SUBSCRIPTION £195

TWO-YEAR SUBSCRIPTION £351

The House Magazine is published by Dods

The House Magazine is printed in the UK by The Magazine Printing Company using only paper from FSC/PEFC suppliers. www.magprint.co.uk

The publisher and editor are most grateful to the Clerk of the Parliaments, the Clerk of the House and other senior officers of both Houses for the support and advice they readily give.

ISSN 0309-0426 © Dods

Reproduction in any form is prohibited without prior written consent.

EDITOR Gisela Stuart MP

ASSOCIATE EDITORS Graham Brady MP, Charles Kennedy MP, Austin Mitchell MP, Priti Patel MP, Jenny Willott MP

LIFE PRESIDENT Lord Cormack

Dods is widely respected for producing highly authoritative and independent political publications. Its policy is to accept advertisements representing many sides of a debate from a variety of organisations. Dods takes no political stance on the messages contained within advertisements but requires that all content is in strict accordance with the law. Dods reserves the right to refuse advertisements for good reason (for example if it is libellous, defamatory, pornographic, socially unacceptable, insensitive or otherwise contrary to editorial policy).



In the government's in-tray marked "unfinished business" is devolution in England outside London. The majority of those English cities

who were asked back in May said 'no' to a directly elected mayor. And yet most people where aware of the Ken versus Boris battle in the capital. But how many of us understand how the system works?

We hope this guide provides insights and explanations on how it all shapes up in practice. The section on the 25 London Assembly members gives background, and along with our comprehensive list of contact details will, we hope, be useful anyone who has an interest in "who runs London".

GISELA STUART MP Editor

Contents

4 **TONY TRAVERS** takes a look at the history of the London Assembly and City Hall

10 **SONIA PURNELL** wonders how Boris Johnson will approach his second term as Mayor

16 **ASSEMBLY MEMBERS** Profiles of all 25 Assembly Members at City Hall

50 **ORGANOGRAM** Boris Johnson and his team

52 **PAUL WAUGH** looks at the Mayor's responsibility for police and transport, while **SAM MACRORY** outlines the people with executive power at City Hall

56 **CONTACTS** The key contacts at City Hall

62 **PIPPA CRERAR** dissects the team of advisers and deputies who help Boris Johnson run London



CERTIFIED
CIRCULATION: 2341



PoliticsHome

Ten years of progress?



The Queen officially opens City Hall in 2002. The building is well known in the capital, but do Londoners really know what goes on inside?



Tony Travers looks at the creation of the London Assembly, a body in need of further powers

The London Assembly might have been called the 'London City Council', though 'LCC' would probably have sounded too much of a throwback to the London County Council, the pre-1965 elected authority for the capital. As it is, the government decided to give the body a name that is the same as those given to the elected assemblies of Wales and Northern Ireland. The London Assembly is, in this sense at least, grander than a county council. But it is also less powerful than most other elected institutions in the United Kingdom.

London government was reformed in 2000. The Greater London Authority (GLA) was created, consisting of a directly-elected executive mayor and a separately-elected assembly. The GLA filled in the governmental vacuum left by the abolition of the Greater London Council (GLC) in 1986. Ironically, the removal of the GLC had created the democratic space into which the more powerful GLA was placed. Today, after 12 years of the mayor-and-assembly model, there few, if any, calls for wholesale reform.

But there are concerns that the Assembly has had to operate with too little power to be

an effective democratic check on the mayor. In the legislation which set up the GLA, the mayor was given substantive powers to determine policy, set budgets and appoint members of the boards that run transport and other services. Under Ken Livingstone (2000-08) and Boris Johnson (2008-) the mayor's office has become the epicentre of executive control within the GLA. By contrast, the Assembly has had to fight hard to be heard.

The Assembly consists of 25 members, with 14 'constituency' members and 11 members drawn from a 'London-wide' list of candidates. The 'additional member' system

“ **The relationship between the assembly and the mayor has often appeared testy** ”

of proportional representation is used. When creating the GLA, ministers decided to have a small assembly with very large constituencies so as to avoid parochialism: with around 550,000 residents per constituency, it would be hard for members to make demands for highly-localised interests. Assembly members were expected to use their position to hold the mayor to account.

The use of proportional representation, coupled with the small number of

Assembly members, has inevitably led to small party groups. Following the 2012 election, Labour has 12 members – the largest number ever won by a single party. Even when there is a significant shift of votes from one party to another, only two or three seats are likely to change hands. Assembly elections are inevitably overshadowed by the mayoral election.

From the outset, the Assembly has questioned the Mayor and mayoral advisors about policy, strategies and operations. Scrutiny ranges across all mayoral responsibilities, including policing, transport, the environment, housing and regeneration. Inquiries are also undertaken into issues of more general concern to Londoners. The Assembly also oversees the

Mayor's budgeting and expenditure and has the power to amend his total budget if two-thirds of the members vote to do so. The Mayor is required to consult the Assembly about the strategies he must, by law, determine; he must then respond to comments the Assembly make to him. The Assembly may also reject the mayor's statutory strategies if two-thirds of the members vote so to do.

Reports are produced on a regular basis and on a wide range of issues. Recent ones have considered the Olympic legacy, neighbourhood planning and the promotion of London. There are 11 committees for matters other than standards, including the Budget and Performance Committee, the Economy Committee, the Police & Crime Committee



“ The mayor combines executive and legislative functions, leaving the Assembly as a relatively modest institution with oversight powers ”

the Housing & Regeneration Committee and the Transport Committee. The Assembly operates in a way that resembles the work of House of Commons select committees, though inevitably Commons reports can command greater media attention.

The relationship between the assembly and the mayor has often appeared testy, with successive mayors being subject to sharp questioning at 'Mayor's Question Time' which has on occasion led to frayed tempers. The Assembly also holds confirmatory hearings on senior mayoral advisors.

Although the Assembly's powers have been strengthened somewhat since the GLA was originally created, there can be little doubt that the mayor is substantially more powerful.

Unlike the American system of government from which the London model is broadly derived, there is no formal separation of powers between the mayor (as executive) and the assembly (as legislature). The Mayor combines executive and legislative functions, leaving the Assembly as a relatively modest institution with oversight powers.

The Assembly must therefore work hard to achieve impact on the mayor's policies, budget and actions. Reports have on occasion had impact, but have generally suffered from a lack of longer-term consistency of approach. The Budget and Performance Committee has latterly become far more effective in producing reports that examine trends and outcomes. The more that transport, police and other ➤



The London Assembly, says Tony Travers, has "overseen the evolution of an entirely new system of city-wide government for the capital"

committees can pin down the mayor's agencies with a continuing data-based analysis of performance and service quality, the greater the Assembly's impact is likely to be.

Looking ahead, the Assembly's powers will need further enhancement if it is to grow in stature and effectiveness. When reform to the London government is next considered, the government should consider the possibility of moving further towards the full American model where the Assembly has greater legislative power. The mayor needs to be a powerful executive to be able to get things done. But the Assembly needs to have the relatively strength to provide effective checks and balances.

The London Assembly has, like the mayor, now existed for 12 years. In this time, it has overseen the evolution of an entirely new system of city-wide government for the capital. The Assembly has performed its oversight duties, though possibly without the impact that might have been possible with a deeper and more granular analysis of the operations of institutions such as Transport for London and the Metropolitan Police. The Assembly has operated in an open and transparent way, made easier by the fact it has no executive responsibilities.

From time to time there are calls to replace the Assembly with a committee of borough leaders. Such a move would potentially over-burden leaders and borough mayors whose focus is, for obvious reasons, more local. But if the Assembly is to remain secure in its position, it will need to raise its profile and convince the electorate it delivers value for money. In London government, nothing is forever. 🏰

Tony Travers is director of the Greater London Group at the London School of Economics



As the mayor's office becomes "the epicentre of executive control", the London Assembly struggles to make itself heard, writes Tony Travers

Eighth Edition – 2011/12

DODS

HANDBOOK OF HOUSE OF COMMONS PROCEDURE

NEW...

Order your copy today!

www.dodsshop.co.uk

or call 020 8433 6687



Sessions
Sittings
Committees
Debates
Legislation
Questions



Going through the motions?



Boris Johnson has never shown much respect for the London Assembly – a situation unlikely to change, writes **Sonia Purnell**

When Boris Johnson appeared at the first Mayor's Question Time after winning a second term on 3 May, it would have been natural to expect him to be in expansive mood. Only four years previously he had been written off by most his own party as a 'disaster waiting to happen' mayor; yet here he now was, returned for a second City Hall term in a political coup de grace. A Tory with increasingly unapologetically Tory views had re-conquered a city otherwise swinging back to Labour. Londoners returned four more Labour members to the 25-strong London Assembly (giving it 12 seats to the Conservatives' nine) but when it came to the mayor they voted Boris.

Yet once again Johnson's mood with the Assembly when they met in the oddly lifeless Chamber on 23 May was tetchy, derisive and occasionally obstructive. It is an attitude to which AMs – and the handful of dedicated City Hall observers who sit in the public

gallery - have grown accustomed. Yet in truth, contrary to common perception, Labour's gains on the Assembly will alter little and Johnson no doubt knows it. Beyond a few other minor flourishes, its sole real power lies in the ability to block the mayor's annual Budget. But to do so it needs a two-thirds majority and the Conservatives' remaining nine seats even after their recent losses render such an outcome unlikely in the extreme.

Even the Conservatives' leader Andrew Boff describes the Assembly's purpose as little more than "very expensive whining." Its committees, he believes, work better at holding the executive to account than the monthly plenary sessions but they cannot call the Mayor to give evidence, only his officials. "The New York mayoralty has arguably more powers than the London one, but it also has more checks," he says. "Democracy is about tension between the executive and the legislature and the London model is actually designed to remove them. The Assembly punches below its weight because it cannot stop the Mayor or even propose alternative policies, it can merely advise him. He then ignores our reports.

"The Mayor has made it absolutely obvious he does not want to appear before the Assembly as it just uses up time. Legitimacy can only come to us if the Assembly has the powers to balance the mayoralty." Boff believes that the government's desire to see the London model replicated by other cities is therefore misguided. "Frankly, I just don't believe in executive mayors, they are an abhorrence. They may lead to more effective decision-making, but they are not democracy. The Mayor should be elected by the Assembly [with the possibility of deselection too]. Of course we don't want to kick Boris out and we support a lot - but not all - of >

“ When all else fails, Johnson heaps personal insults on his interrogators ”



what he does. But he knows we can't kick him out and only at Budget time does he need our support. It's surprising how many more calls we get from him then compared to the rest of the year."

Consequently, many believe that the original purpose of the Assembly in holding the Mayor to account has not and will not be properly fulfilled within the current set-up. Even Nick Raynsford, the thoughtful Labour ex-minister responsible for overseeing the establishment of the London mayoralty in 1999, concedes that the Assembly (which costs £8m a year and provides members with a salary of £53,439 and enviable secretarial backup) is underpowered. With honourable exceptions, this is reflected in the people serving it, not all of whom, observers believe, possess the most forensic or determined brains. Johnson – and also arguably his predecessor Ken Livingstone – has been able to run rings round it.

Mayor's Question Time is the monthly set piece, lasting two-and-a-half hours. Each member is granted a six-minute slot in which to ask him questions but Johnson has perfected the art of filibustering, going off at tangents, asking for the question to be repeated, answering a totally different question and persistently shouting over questions. The six minutes rapidly disappear leaving the questioner and the audience little the wiser. When all else fails, Johnson heaps personal insults on his interrogators, accusing opposition members of needing

'care in the community' or 'suffering from Tourette's Syndrome.' Female members complain that he is particularly derisive of them – and his habit of addressing them as 'dear,' describing them as 'economically illiterate' or talking 'drivel' is currently the subject of a formal complaint. Johnson has dismissed these concerns, however, stating merely that he is not 'remotely sexist.'

"Johnson doesn't like to be questioned for long periods of time, particularly about what he actually believes in," confirms the Labour group's leader Len Duvall. "He never admits he's got it wrong. He can be quite personally brutal with his putdowns, particularly with women and particularly if he gets caught out on something. When he gets in trouble sometimes, such as when he contradicts what he's said >





“**Johnson** – and also arguably his predecessor Ken **Livingstone** – has been able to **run rings round** the **Assembly**”

Once a month Boris Johnson faces a mayoral question time at City Hall – but Assembly Members rarely trouble the mayor, says Sonia Purnell



Will the presence of ex-MPs like Andrew Dismore (pictured) at City Hall give the Assembly more firepower?

previously, you see him being fed new lines on his BlackBerry. Ken Livingstone could also be brutal, but it would be more about people's politics and about the detail of their stance than who they are personally."

The Assembly is little covered even by the London press – but that has not stopped members, even from his own side, from trying to take the mayor to task. Brian Coleman, Johnson's former Fire and Emergency Planning chief, and his former statutory deputy mayor Richard Barnes, were two Conservatives 'not afraid' to ask difficult questions on occasion. Both, however, lost their seats in May.

Difficult questions, in future, are perhaps more likely from Jenny Jones, the Green mayoral candidate who kept her Assembly seat, who will continue to press the mayor on his much-criticised cycling policies. John Biggs,

the combative Labour member, will no doubt cross swords with him again in future, perhaps aided by the energetic newcomer Tom Copley. Len Duvall will no doubt continue to provide a steady hand as Labour leader. Another new name is Andrew Dismore, a former Labour MP, while there is also a former MP (and ex-minister in the Thatcher government) on the Conservative side – Richard Tracey.

Most observers believe that the arrival of former MPs on the Assembly must be a boon in boosting its firepower. But if Boff is right, their efforts to hold the executive to account – particularly one as adept at being elusive as Johnson – will continue to be stymied by the architecture of the mayoralty itself. 🗳️

Sonia Purnell is the author of *Just Boris: The Irresistible Rise of a Political Celebrity*, Aurum Press, £8.99



You can't rely on
the British summer...

...but you can rely on the unrivalled property expertise of Hamptons International. From the Jubilee celebrations to the Olympic torch's journey across the UK culminating in the opening of the Games, the whole country is in high spirits and nothing can dampen that - not even the weather. The outlook for the property market is equally buoyant. While some may claim we're in stormy times, with our expanding network of 85 branches and superb local knowledge we're continuing to successfully find the right tenants or buyers for our clients.

If you are looking to move, please call us now for a free market appraisal.

Hamptons Pimlico & Westminster

50 Belgrave Road, Pimlico & Westminster, London SW1V 1RQ

Lettings. 020 7717 5479 pimwestlettings@hamptons-int.com

Sales. 020 7717 5477 pimwest@hamptons-int.com

www.hamptons.co.uk

HAMPTONS
INTERNATIONAL

Beyond your expectations

WHO RUNS LONDON?

There are 25 London Assembly members:
12 Labour, nine Conservative, two Liberal Democrats,
and two Greens.



Jennette Arnold, North East (Hackney, Islington & Waltham Forest)

Labour

First elected 2000

Responsibilities: Chair of the London Assembly, Deputy Chair of the GLA Oversight Committee, of the Police and Crime Committee and Transport Committee

Interests: good governance, work of the London Assembly, social justice, education, training and youth services

CV: She worked as a nurse, had senior roles with the Royal College of Nursing and was a training and development consultant. In 1994, she was elected to Islington council and worked there for eight years, including a term as deputy mayor. Jennette Arnold was then elected to the GLA in 2000.

John Biggs, City and East (Barking & Dagenham, City of London, Newham and Tower Hamlets)

Labour

First Elected 2000

Responsibilities: Chair of the Audit Panel, Chair of the Budget and Performance Committee, member of the Confirmation Hearings Committee, Economy Committee, GLA Oversight Committee, Housing and Regeneration Committee,

Deputy Chair Labour Group, Labour Group Whip

Interests: Transport, Health, Equalities, regeneration, the economy, skills & employment, maximising the post Olympic benefits for East London

CV: A graduate in Chemistry, Computer Science and Law, before being elected to the GLA, Biggs worked as an analyst in the City and as Director of a political pressure group. Elected in 2000, nine years later he was made an Honorary Fellow of Queen Mary University, London in 2009. A veteran of East End and London Labour politics, he is not afraid of sharp exchanges with the mayor.





Tom Copley, Londonwide

Labour

First elected 2012

Responsibilities: member of the Economy Committee, Housing and Regeneration Committee and Transport Committee

Interests: Housing, in particular the provision of more council homes and transport, arts & culture, tackling racism and extremism, acting, reading, running and “stumbling my way through Radiohead songs on the guitar”

CV: Just 27 years-old, rising star Tom Copley joined the Labour party aged 19, and has worked for anti-fascist charity Searchlight, fighting racism and discrimination since 2011. Before that he worked for Labour MPs Graham Allen, Vernon Coaker and Frank Dobson. Tipped as a future MP, Copley has chaired London Young Labour and sat as the London representative on the young Labour National Committee

Andrew Dismore, Barnet and Camden

Labour

First elected 2012

Responsibilities: Member of the Confirmation Hearings Committee, Economy Committee, GLA Oversight Committee, Housing and Regeneration Committee, Planning Committee and Standards Committee

Interests: gardening; the arts, especially opera and cinema, historical research, and Greece – history and culture

CV: Dismore's grandfather was a councillor, as were both his parents. After completing two law degrees and a stint working for the GMB Trade Union, he decided to go back to law school and qualified as a solicitor – specialising

in representing injured workers. In 1982 he won his first election to be a local Councillor in Westminster and in 1997 became the first Labour MP in Hendon since 1945 before losing his seat in 2010. During his time as an MP Dismore made a Parliamentary record by

giving a speech which lasted for 197-minutes, earning himself a reputation as a master- filibuster. In 2012 he joined the London Assembly after beating Tory Brian Coleman in a high profile contest.



Len Duvall, Greenwich and Lewisham

Labour

First elected 2000

Responsibilities: Leader of the Labour group, Chair of the GLA Oversight Committee and of the Housing and Regeneration Committee, Member of the Confirmation Hearings Committee, Planning Committee, Police and Crime Committee and Standards Committee

Interests: Economic development and regeneration

CV: Duvall was a member of the London Borough of Greenwich for eleven years (1990 to 2011) and become its leader two years after being in office. Before being elected to the GLA on May 2000, he was one of the founders of the New Local Government Network, Chair of the Thames Gateway London Partnership, Chair of the Improvement and Development Agency for Local Government and a member of the Council of Europe and Chamber of the Regions. A former chairman of the Metropolitan Police Authority, Duvall is determined to hold the Mayor to account on Law and Order.





Nicky Gavron, Londonwide

Labour

First elected 2000

Responsibilities: Member of the Health and Environment Committee, Housing and Regeneration Committee and Chair of the Planning Committee

Interests: Strategic planning, climate change, children and young people, housing, community and cultural regeneration

CV: Nicky Gavron has been an elected politician since 1986 when she first became involved in politics campaigning against the widening of the Archway Road. After a long career serving on Haringey Council, she was elected to the GLA in 2000, later serving as Deputy Mayor of London from May 2000 until June 2003 under Ken Livingstone.

Murad Qureshi, Londonwide

Labour

First elected 2004

Responsibilities: Member of the Audit Panel, Chair of the Health and Environment Committee, Chair of London Waterways Commission, member of the Police and Crime Committee, Standards Committee, Transport Committee, Heathrow Airport Consultative Committee (HACC) and member of the London Fire and Emergency Planning Authority

Interests: Environment, sports, transport, housing, reviving London's rivers and canals

CV: Murad Qureshi has an MSc in Environmental Economics from University College London and before being elected to GLA he worked for 15 years in housing and regeneration. From 1994 to 2002, Qureshi was an Executive member of SERA, campaigning on green issues – he believes renewables are a viable energy source. Between 1998 and 2006 he was a member of the City of Westminster Council. A trusted ally of Ken Livingstone under previous administrations, Qureshi has called for the Bakerloo line branch of Edgware Road to be renamed Church Street.





Dr Onkar Sahota, Ealing and Hillingdon

Labour

First elected 2012

Responsibilities: Member of the Health and Environment Committee, House and Regeneration Committee and Planning Committee

Interests: Health, house generation

CV: Onkar Sahota graduated from Sheffield University Medical School in 1983 and he has been a G.P since 1989. He began practising in Hanwell and then established his own practice that provided healthcare to some 12,000 NHS patients. Sahota decided to stand for GLA election because he believes that the UK works best when there is opportunity for people to succeed.



Navin Shah, Brent and Harrow

Labour

First elected 2012

Responsibilities: Member of the Planning Committee, Police and Crime Committee and member of the London Fire and Emergency Planning Authority

Interests: community cohesion and planning, art, music, travel and photography.

CV: The first Indian to be elected to the London Assembly, Gujarati-born Navin Shah joined the Labour Party in 1977 after becoming involved in community action groups in Brent and Harrow. Graduating in Architecture at University College of London, he led Harrow Council between 2004 and 2006 and two years later was elected to the GLA.

Valerie Shawcross, Lambeth and Southwark

Labour

First elected 2012

Responsibilities: Member of the Budget and Performance Committee, Confirmation Hearings Committee, GLA Oversight Committee, Planning Committee and Deputy Chair of the Transport Committee

Interests: Transport, safety of Londoners, improvement in London's public services, regeneration, human rights and democracy, bird watching with her husband and painting

CV: With a degree in Politics and an MA in Education, she has worked for the Inner London Education Authority, the Commonwealth Secretariat and as Head of Public Affairs for the National Federation of Women's Institutes. Valerie used to be Labour Party National

Women's officer and served on Croydon Council between 1994 and 2000 – as leader between 1997 and 2000. Shawcross ran as Labour's candidate to be Deputy Mayor in the 2012 elections, having previously failed to win Bermondsey and Old Southwark in the 2010 general election.



Joanne McCartney, Enfield and Haringey

Labour

First elected 2004

Responsibilities: Member of the Budget and Performance Committee, Confirmation Hearings Committee, Economy Committee, Transport Committee and Chair of the Police and Crime Committee

Interests: Policing and community safety, health and public services, children and young people, jobs, skills and economic development, keeping London moving, a greener and environmentally friendly London

CV: Before being elected a GLA member, McCartney worked as a barrister specialising in employment law and helped to establish a local Chambers in Enfield in the early 1990s. She then served as a local councillor in Enfield from 1998-2006 and she is still Chair of Governors at her local primary school.





Fiona Twycross, Londonwide

Labour

First elected 2012

Responsibilities: Member of the Health and Environment Committee, Housing and Regeneration Committee, Police and Crime Committee

Interests: Housing, transport and the environment

CV: Fiona Twycross worked as a senior manager for the health charity Diabetes UK since 2008, most recently as Head of Governance. She sits on the Labour National Policy Forum and is an active committee member of the Friends of the Horniman Museum and Gardens.

Tony Arbour, South West (Hounslow, Kingston-upon-Thames & Richmond-upon-Thames)

Conservative

First elected 2000

Responsibilities: Member of the Economy Committee, GLA Oversight Committee, Planning Committee, Police and Crime Committee and member of the London Fire and Emergency Planning Authority

Interests: Improving the environment and safety of the boroughs of Hounslow, Kingston upon Thames and Richmond upon Thames, Greater London planning matters, improving access to the River Thames and increasing its use, transport issues, cutting police bureaucracy and red tape and using police to make London safer

CV: With a degree in Science and a master of Business Administration, Tony Arbour became a lecturer at Kingston University Business School in the late 60s. He held this position until being elected to the GLA in 2000. Arbour was first elected Councillor for Hampton Wick in 1971 and he is now a Councillor in Richmond upon Thames Borough (having been Leader between 2002 and 2008). Highly-rated in the Tory Party for the way he has fended off the Lib Dem challenge in South London



**Gareth Bacon, Londonwide
Conservative**

First elected 2008

Responsibilities: Member of the Audit Panel, member of Budget and Performance Committee, Economy Committee, Planning Committee and member of the London Fire and Emergency Planning Authority

Interests: Unimpressed by the role of the banking industry in the economic downturn, but believe that financial services are a vast provider of wealth to London and the UK as a whole and that recriminations must be balanced and proportionate. Support the devolution of power from government to London Boroughs, but believe that this must be accompanied by greater autonomy for the London Boroughs I believe that the London Assembly needs to be given a greater role deciding Mayoral strategies and the governance of London. Would also like to see the legitimacy of the Assembly increased by having a single Assembly Member elected per borough on a first past the post electoral system, and would hold those elections every four years but two years after each Mayoral election.



CV: Born in Hong Kong, Gareth Bacon studied Politics and Government at the University of Kent at Canterbury, followed by an Master in European Studies in 1997. He became a member of the Conservative Party in 1987 and was elected Councillor in Bexley at the age of 26. Elected in 2008, he was appointed by Mayor Boris Johnson to serve on the London Fire & Emergency Planning Authority. In October 2010 he was appointed as Conservative Budget spokesman. Describing himself as a “right of centre” Conservative, Bacon is “fiercely Eurosceptic”, angered by the “dumbing down” of educational standards, suspicious of the climate change agenda and a passionate defender of the union.



Andrew Boff, Londonwide

Conservative

First elected 2008

Responsibilities: Leader of the Conservative group, member of the Confirmation Hearings Committee, member of the Economy Committee, GLA Oversight Committee, Housing and Regeneration Committee, Planning Committee, Standards Committee

Interests: Business, housing and regeneration

CV: Andrew Boff was a Councillor in Hillingdon (from 1982 to 1994) where he led the council for two years in the early 1990s, and in Hackney (2005-2006). He is a member of the Broadway Market Traders and Residents Association and produces EASTeight magazine – a publication that aims to promote bottom-up economic development. One of the great survivors of London politics, Boff contested the Conservative nomination for the London mayoral election in 2000, 2004 and 2008. Boff is the new Tory Group leader at the Assembly

Victoria Borwick, Londonwide

Conservative

First elected 2008

Responsibilities: Statutory Deputy Mayor of London, member of the Health and Environment Committee, Police and Crime Committee and Transport Committee

Interests: Improving access to childcare, reducing fuel poverty, volunteering

CV: Elected to Kensington and Chelsea Borough Council in May 2002, she became Director of Income Generation and Marketing for the Conservative Party in October 2002. She was a Mayoral candidate in 2008 but lost the nomination to Boris Johnson before being elected to the GLA. Following the 2012 election, Boris Johnson appointed her Deputy Mayor.



**James Cleverly, Bexley and Bromley
Conservative**

First elected 2008

Responsibilities: Member of the Health and Environment Committee, Police and Crime Committee and Chairman of the London Waste and Recycling Board

Interests: Business, publishing

CV: James Cleverly joined the Conservatives in 1999. Prior to that he worked in web and print publishing. Having a business degree from Thames Valley University he was a co-founder of LaunchLab.co.uk – a website that helped entrepreneurs and small business grow and develop. Cleverly was an officer in the Territorial Army for almost 20 years, rising to the rank of Major. No fan of Simon Hughes, Cleverly marked 100 days of the coalition government with a blogpost attacking the “bone-headed” Lib Dem MP.





**Roger Evans, Havering and Redbridge
Conservative**

First elected 2000

Responsibilities: Deputy Chair of the Audit Panel, member of the Budget and Performance Committee, Housing and Regeneration Committee, Planning Committee

Member of the Transport Committee

Interests: Cutting crime, protecting and promoting the interests of outer London, keeping costs of GLA to a minimum, supporting the freedom of drivers whilst improving the tube and bus network

CV: Roger Evans worked for the Royal Mail before training as a Barrister. From 1998 to 2000 he worked as a legal advisor to an IT recruitment company and was elected to Waltham Forest council in 1990. He was first elected to the GLA in 2000, being appointed Deputy Leader of the Conservative group at City Hall in 2007.

**Kit Malthouse, West Central
(Hammersmith & Fulham, Kensington &
Chelsea, Westminster)**

Conservative

First elected 2008

Responsibilities: Member of the Health and Environment Committee and Standards Committee. Deputy mayor business and enterprise.

Interests: Social services, poverty

CV: With a degree in Politics and Economics

from Newcastle, Kit Malthouse qualified as a Chartered Accountant with an international firm in the City of London. He was first elected as a Councillor for Westminster in 1998 and stood down from the council in 2006 with reserves more than doubled and council tax frozen at the lowest in the country. Two years later, he was elected a GLA member. Malthouse played a key role as deputy mayor for policing, and now has a big task in overseeing economic development in the capital.



**Steve O'Connell, Croydon and Sutton
Conservative**

First elected 2008

Responsibilities: Member of the Confirmation Hearings Committee, GLA Oversight Committee, Housing and Regeneration Committee, Police and Crime Committee and Transport Committee

Interests: Crime and safety, community cohesion, protecting the environment and green spaces and social mobility

CV: Steve O'Connell worked for 28 years for Barclays Bank and he is a qualified IFA and Mortgage Broker. He became a Councillor for Kenley, Croydon, where he lives, and stepped down as Deputy Leader when elected to the London Assembly in May 2008. O'Connell is also a member of the Metropolitan Police Authority.





**Richard Tracey, Merton and Wandsworth
Conservative**

First elected 2008

Responsibilities: Member of the Budget and Performance Committee, Confirmation Hearings Committee, Housing and Regeneration Committee, Transport Committee, Vice-Chairman of the London Fire and Emergency Planning Authority and Mayor's Ambassador for River Transport

Interests: Rowing, rugby. Cutting crime and protecting residents with more visible policing, improving the public transport network, keeping the costs of the GLA to a minimum

and protecting and promoting the interests of Merton and Wandsworth and London

CV: Richard Tracey started his career as a journalist and worked for the BBC and the Daily Express before being elected as an MP for Surbiton. He served as an MP for 14 years and was held the post of Environment Minister from 1985 to 1987. He is a Justice of the Peace and Freeman of the City of London, and in 2006 became Chairman of Sport England for South London.

Stephen Knight, Londonwide**Liberal Democrat****First elected** 2012**Responsibilities:** Deputy Chair of the Budget and Performance Committee and Economy Committee, Member of the Health and Environment Committee and Standards Committee**Interests:** Economy, jobs & growth, GLA budget, environment & air pollution, fire safety

CV: Stephen Knight was President of the Students' Union at the University of Southampton and he later worked for London councils as a political adviser to senior Liberal Democrat councillors in the capital. Elected Councillor for Teddington Ward in Richmond upon Thames in 1998 he was Deputy Leader between 2006 and 2010. Firmly on the left of the party, Knight is not a fan of the Westminster coalition with the Conservatives.



Caroline Pidgeon, Londonwide, Liberal Democrat

Liberal Democrat

First elected 2008

Responsibilities: Leader of the Liberal Democrat group, member of the Confirmation Hearings Committee, GLA Oversight Committee, Housing and Regeneration Committee, Deputy Chair of the Police and Crime Committee and Chair of the Transport Committee

Interests: Transport, local democracy, children and young people

CV: Highly-rated Caroline Pidgeon graduated from the University of Wales, Aberystwyth in 1994. She worked for local government and the health service for ten years. Between 1998 and 2010 she was a Councillor in Southwark, where she was Deputy Leader and Executive Member for Children's Services and Education. Elected to the GLA in 2008, in April 2009 she campaigned for 'One hour bus ticket' which would allow Londoners to travel for up to an hour on a single bus ticket, a pledge that formed the centrepiece of Brian Paddick's mayoral election campaign in 2012 when she ran as the deputy mayoral candidate.





Darren Johnson, Londonwide

Green

First elected 2000

Responsibilities: Deputy Chair of the London Assembly, member of the Budget and Performance Committee, GLA Oversight Committee, Transport Committee, Deputy Chair of the Housing and Regeneration Committee and member of the Member of the London Fire and Emergency Planning Authority

Interests: Climate change, air pollution, protection of green spaces, tackling low pay, protecting public services

CV: In 1994 Johnson got a first class degree in Politics and Economics from Goldsmiths College but his passion for the subject first ran into him when he stood for the mock general elections in 1979 at his school and won. He was responsible for the Greens' strategy for the 1994 European election before he ran for Mayor in 2000, the year he became a GLA member. Johnson is a former deputy mayor under Ken Livingstone.

Jenny Jones, Londonwide

Green


First elected 2000

Responsibilities: Leader of the Green group, member of the Confirmation Hearings Committee, Economy Committee, Deputy Chair of the Health and Environment Committee and Police and Crime Committee

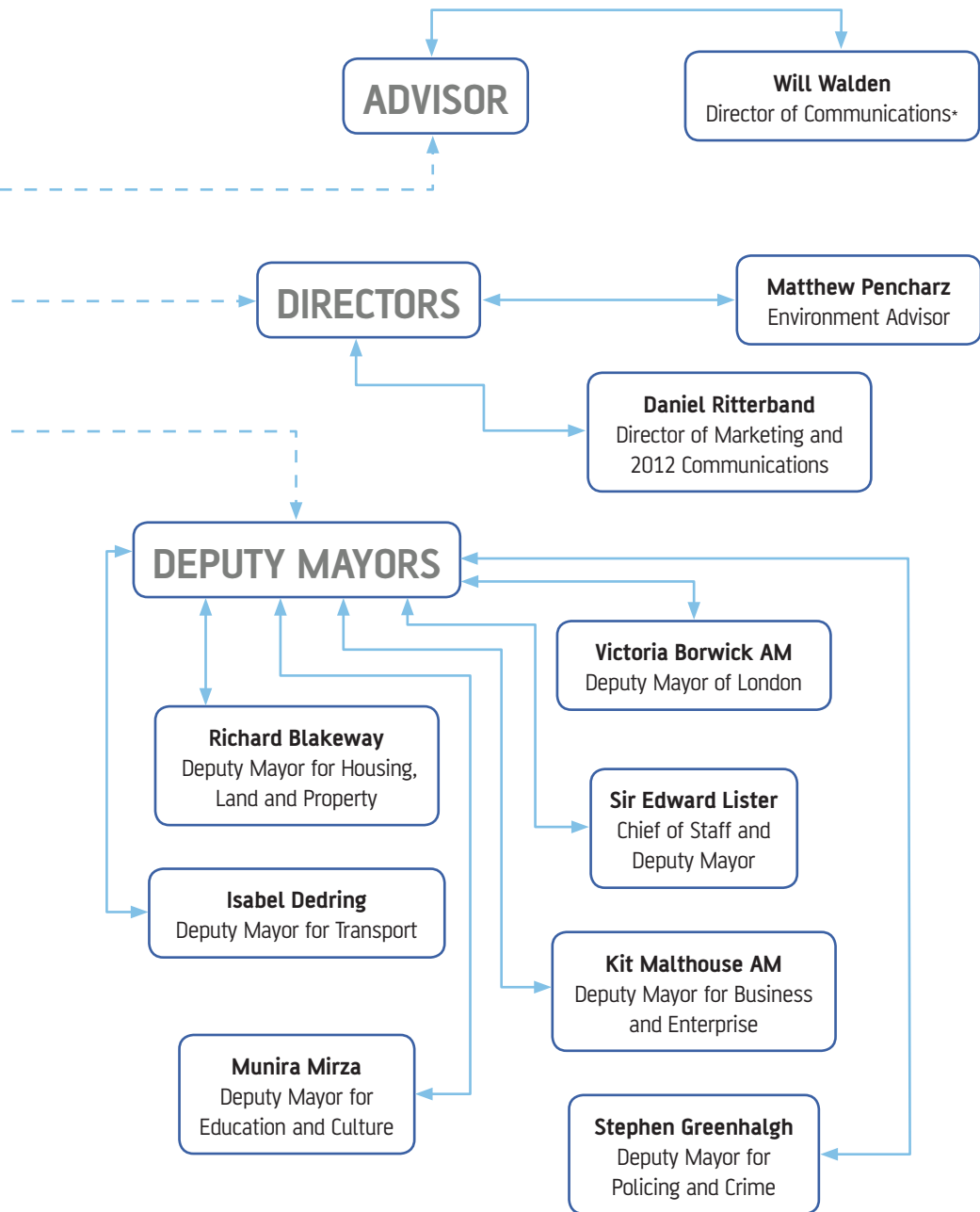
Interests: Housing costs and condition, policing and civil liberties, cycling and walking, road safety, legacy from 2012 Olympics/ Paralympics

CV: In 2004, Buckingham Palace named Jenny Jones as one of 200 women of achievement. Having attended the Institute of Archaeology at University College London, she then spent 10 years in the Middle East studying carbonised plant remains. Jones stood as the Green Party's Mayoral candidate in 2012, having served as Deputy Mayor between May 2003 and June 2004 under Ken Livingstone.



A close-up portrait of Boris Johnson, the former Mayor of London, looking directly at the camera with a neutral expression. He has his characteristic messy blonde hair and is wearing a dark suit jacket, a light blue dress shirt, and a patterned tie.

WHO REPORTS TO BORIS?



*due to start in July 2012



Who makes the decision on the areas which really matter for Londoners?

Paul Waugh investigates

Ask any Londoner what their key priorities are and invariably they will give the same answer: transport, crime, housing and jobs. Not surprisingly, mayoral elections often boil down to bitter battles over Tube, bus and train services and fares, closely followed by a debate about the thinness of the thin blue line in the capital. The Mayor's most sweeping powers and biggest budgets certainly stem from his responsibilities for the Metropolitan Police and Transport for London. Yet there are important differences between his executive roles over each, particularly after new legislation from the Coalition government. The GLA also retains significant powers over housing, economic development and regeneration.

Policing the police

Boris Johnson's newest baby in the GLA family is the Mayor's Office for Policing and Crime. Formally created on 16 January 2012, the body had its acronym changed after the Mayoral elections in June following worries that its name just didn't quite sound tough enough. For months, it had been known as MOPC or 'Mopsy'. But the new Deputy Mayor for Policing and Crime, Stephen Greenhalgh, changed it to MOPAC instead. "Beatrix Potter is dead. There's no more Mopsy, Flopsy or Cottontail," he said.

The change is not merely cosmetic. Mayor Johnson wants his new executive arm to tackle the ultra-serious business of managing the Met and its costs at a time of cuts pressures and public worries about crime.

London's set-up, which gives the Mayor closer control of the Met's £3.6bn annual budget and its 50,000 staff, is the first example in the country of David Cameron's new

Power and priorities

"Boris Johnson retains the power to 'call in' big planning developments such as the Shard"



approach to giving the public a more direct form of political accountability for crime.

The Police Reform and Social Responsibility Act 2011 created new Police and Crime Commissioners and most will be elected in November 2012. But as London already has a directly elected Mayor, and has a nationally important police force, it was given separate provision in the legislation.

The arrangements are aimed at more effectively splitting the executive and scrutiny functions of the GLA. The old Metropolitan Police Authority was often in the bizarre situation of effectively voting against budgets approved by itself. Under the new structure, MOPAC is the executive arm, while the Assembly's new Police and Crime Committee provides the scrutiny.

The Home Secretary retains the right to appoint the Metropolitan Police Commissioner, but has to consult the Mayor before doing so. It was this consultative power that led to Boris Johnson ousting Sir Ian Blair soon after he came to power in 2008.

The 12-strong Police and Crime Committee is made up of 4 Conservatives, 6 Labour, one Liberal Democrat and one Green Assembly member. MOPAC, whose chief executive is Catherine Crawford, has a key audit function of the Met's budget and is

“ Mr Johnson has hinted that fare rises may have to slow down mid-term. ”

staffed by several accountants and managers. It is meant to be more streamlined than the old MPA, but at a time of 17% cuts to the Met budget, its own budget seems not to have been cut at all.

Tracking travel

As the chair of Transport for London, the Mayor has ultimate responsibility for the capital's £9bn annual transport budget and its massive network of Tubes, trains and buses. Boris Johnson has set the top-line priorities for fare rises, believing they're necessary to give TfL the investment it needs. But the day-to-day oversight of the system falls however to his deputy chair, Isabel Dedring. American Dedring was chief of staff to Bob Kiley when he was Transport Commissioner and impressed the Mayor as his environment adviser. Described as an 'alpha female', the Harvard-educated mother-of-two sets the direction of TfL in line with the Mayor's



Sam Macrory takes a look at the executive power at City Hall

The Corporate Management team meets weekly, under Jeff Jacobs, who is effectively London's Permanent Secretary. Jacobs, who is the director of paid services, joined the civil service at 16 and worked as Principal Private Secretary to John Prescott at the Department for the Environment, Transport and the Regions before switching to lead the Government Olympic Executive at the Department for Culture, Media and Sport. Ken Livingstone brought Jacobs to City Hall as an advisor in 2007, with Jacobs later impressing Boris Johnson with his handling of the transition phase between mayors. Johnson dispatches his chief of staff Sir Eddie Lister - who is also present at the Mayor's weekly meetings with his own advisors - to attend Jacobs' team meetings. Neale Coleman, the Director of London 2012 at the GLA and the Mayor's advisor on London 2012, was first appointed by Livingstone and was close to the former mayor. Coleman has been in post since 2003. David Lunts, who worked with John Prescott at the Office of the Deputy Prime Minister, is the Executive Director of Housing and Land at the GLA, a post he previously held when it fell under the remit of the Homes and Communities Agency. Mark Roberts, the Executive Director of Secretariat, arrived at the in GLA in 2000 after a string of roles at a variety of London Boroughs. Martin Clarke, the Executive Director of Resources, was part of the team which drew up the first year budget for the GLA. The relative newcomer is Fiona Fletcher Smith, executive director for environment and development, who joined from Hackney Council in 2009. The final member of the team is Daniel Ritterband, the executive director of Communications and 2012 marketing. Ranked amongst the most influential gay people working in British politics, Ritterband worked for both Michael Howard and David Cameron, before leading Mr Johnson's 2008 campaigns team. 🏳️‍🌈



Boris Johnson takes a ride on a new Circle Line train. The Mayor believes fare rises are crucial to give TfL the investment it needs.



“ The Mayor’s Office for Policing and Crime had its acronym changed after the following worries that its name just didn’t quite sound tough enough ”

wishes. She also has the titular, but not statutory, role of Deputy Mayor for Transport.

A key issue over the next four years will be delivering the increasing Mayoral control over suburban rail services that Mr Johnson campaigned on. He has also hinted that fare rises may have to slow down mid-term.


Building on regeneration

Housing, economic regeneration and planning are all major mayoral functions. The Coalition’s Localism Act means the Mayor can more quickly consult the public on his strategies for each, while giving the Assembly a new two-thirds majority power to reject them outright.

The old London Development Agency has been scrapped along with other RDAs across the country. However, the Mayor has lost not just the LDA but also most of its big £3bn budget as Whitehall saw the chance to cut some cash. The remaining regeneration functions have been folded into the GLA. Non-Olympic regeneration funding is around £400m.

The new London Legacy Development Corporation (LLDC) deals with planning and regeneration in and around the Olympics site and has powers similar to the old Docklands development corporation. The Mayor has sent his former transport deputy Daniel Moylan to head up the LLDC.

The Mayor does have a beefed up housing role, after the Homes and Communities Agency London was folded into City Hall. Having had capital spending of just £5m previously, he can now determine £800m of housing spending and European grants previously given to the LDA.

Given, his strategic planning role, Mr Johnson retains the power to ‘call in’ big planning developments such as the Shard. 

Contact

CITY HALL

Greater London Authority
City Hall
The Queen's Walk
London SE1 2AA

Tel: 020 7983 4000

MAYOR OF LONDON

Boris Johnson

Mayor of London
Greater London Authority
City Hall
The Queen's Walk
London SE1 2AA

Tel: 020 7983 4100

Minicom: 020 7983 4458

Fax: 020 7983 4057

Email: mayor@london.gov.uk

Samantha Hart

Head of Media
Mayor of London's Press Office
Tel: 020 7983 4714
Mob: 07887 832921

LONDON ASSEMBLY

Media enquiries

London Assembly External Relations team
Tel: 020 7983 4283

Mark Demery

Head of External Relations
London Assembly
City Hall
The Queen's Walk
London

SE1 2AA

Tel: 020 7983 5769

Mob: 07973 191 635

Budget and Performance

Tim Steer

Scrutiny Team Manager
Tel: 020 7983 4250
Email: tim.steer@london.gov.uk

Economy

Richard Berry

Scrutiny Manager
Tel: 020 7983 4199
Email: richard.berry@london.gov.uk

Health and Environment

Carmen Musonda

Scrutiny Manager
Tel: 020 7983 4351
Email: Carmen.Musonda@london.gov.uk

Ian Williamson

Scrutiny Manager
Tel: 020 7983 6541
Email: Ian.Williamson@london.gov.uk

Housing and Regeneration

Paul Watling

Scrutiny Manager
Tel: 020 7983 4393
Email: paul.watling@london.gov.uk

Olympic issues

Richard Derecki

Scrutiny Team Manager
Tel: 020 7983 6540
Email: richard.derecki@london.gov.uk

Planning

Paul Watling

Scrutiny Manager

Tel: 020 7983 4393

Email: paul.watling@london.gov.uk

Alex Beer

Assistant Scrutiny Manager

Tel: 020 7983 4947

Email: alexandra.beer@london.gov.uk

Policing and Crime

Janette Roker

Scrutiny Manager

Tel: 020 7983 5845

Email: Janette.Roker@london.gov.uk

Susannah Drury

Scrutiny Manager

Tel: 020 7983 4942

Email: susannah.drury@london.gov.uk

Ian O'Sullivan

Assistant Scrutiny Manager

Tel: 020 7983 6540

Email: ian.osullivan@london.gov.uk

Transport

Laura Warren

Scrutiny Manager

Tel: 020 7983 4507

Email: laura.warren@london.gov.uk

Jo Sloman

Assistant Scrutiny Manager

Tel: 020 7983 4942

Email: jo.sloman@london.gov.uk

Labour Group Contact Information

Media enquiries

Mark Williams

Tel: 020 7983 4952

Mob: 07825 793 800

Email: mark.williams@london.gov.uk

Conservative Group Contact Information

Press Office

Clive Green

Tel: 020 7983 4960

Liberal Democrat Group Contact Information

General enquiries

Nick Carthew

Tel: 020 7983 4962

Email: nick.carthew@london.gov.uk

Media enquiries

Mark Morris

Tel: 020 7983 4336

Email: mark.morris@london

Green Group Contact Information

Press Office

Ian Wingrove

Press Liaison Officer

Tel: 020 7983 4424

Email: ian.wingrove@london.gov.uk

LABOUR

Jennette Arnold

North East (Hackney, Islington & Waltham Forest)

Tel: 020 7983 4349

Fax: 020 7983 5879

Email: jennette.arnold@london.gov.uk

John Biggs

City and East (Barking & Dagenham, City of London, Newham and Tower Hamlets)

Tel: 020 7983 4350

Email: john.biggs@london.gov.uk

Tom Copley

Londonwide

Tel: 020 7983 5524

Email: tom.copley@london.gov.uk

Andrew Dismore

Barnet and Camden

Tel: 020 7983 6575

Email: andrew.boff@london.gov.uk

Len Duvall

Greenwich and Lewisham

Tel: 020 7983 4517

Email: len.duvall@london.gov.uk

Nicky Gavron

Londonwide

Tel: 020 7983 4509

Email: nicky.gavron@london.gov.uk

Murad Qureshi

Londonwide

Tel: 020 7983 4400

Email: murad.queshi@london.gov.uk

Dr Onkar Sahota

Ealing and Hillingdon

Tel: 020 7983 4000

Email: onkar.sahota@london.gov.uk

Navin Shah

Brent and Harrow

Tel: 020 7983 4377

Email: navin.shah@london.gov.uk

Valerie Shawcross

Lambeth and Southwark

Tel: 020 7983 4401

Email: valerie.shawcross@london.gov.uk

Joanne McCartney

Enfield and Haringey

Tel: 020 7983 4402

Fax: 020 7983 5679

Email: joanne.mccartney@london.gov.uk

Fiona Twycross

Londonwide

Tel: 020 7983 4000

Email: fiona.twycross@london.gov.uk

Conservatives

Tony Arbour

South West (Hounslow, Kingston-upon-Thames & Richmond-upon-Thames)

Tel: 020 7983 4116

Email: tony.arbour@london.gov.uk

Gareth Bacon

Londonwide

Tel: 020 7983 4414

Email: gareth.bacon@london.gov.uk

Andrew Boff

Londonwide

Tel: 020 7983 6575

Email: andrew.boff@london.gov.uk

Victoria Borwick

Londonwide

Tel: 020 7983 4955

Email: victoria.borwick@london.gov.uk

James Cleverly

Bexley and Bromley

Tel: 020 7983 6571

Email: james.cleverly@london.gov.uk

Roger Evans

Havering and Redbridge

Tel: 020 7983 6576

Email: roger.evans@london.gov.uk

Kit Malthouse

West Central (Hammersmith & Fulham, Kensington & Chelsea, Westminster)

Tel: 020 7983 4099

Email: kit.malthouse@london.gov.uk

Steve O'Connell

Croydon and Sutton

Tel: 020 7983 4353

Email: steve.o'connell@london.gov.uk

Richard Tracey

Merton and Wandsworth

Tel: 020 7983 4389

Email: richard.tracey@london.gov.uk

Liberal Democrats

Stephen Knight

Londonwide

Tel: 020 7983 4362

Email: stephen.knight@london.gov.uk

Caroline Pidgeon

Londonwide, Liberal Democrat

Tel: 020 7983 4362

Email: caroline.pidgeon@london.gov.uk

Green Party

Darren Johnson

Londonwide

Tel: 020 7983 4411

Email: darren.johnson@london.gov.uk

Jenny Jones

Londonwide

Tel: 020 7983 4358

Email: jenny.jones@london.gov.uk





Your real-time interaction
with Westminster

Online access to UK parliamentarians, government departments and public affairs professionals



"DodsPeople is a key data resource for communicating with Parliament. The easy to use functionality and constantly updated information have been invaluable".

Fiona Holroyde, Head of Public Affairs, MHP Communications



www.mhpc.com

The online information tool enabling you to reach UK political representatives by:

- Gaining online access to detailed profiles and biographies of UK parliamentarians
- Searching, filtering and saving people groups of your choice for effective communications
- Downloading data for mail-merging
- Emailing and tracking your selected contacts directly from the contact management system

For more information
email Edward.Goldring@dods.co.uk or call **020 7593 5656**, quoting 'DP100'



Kit Malthouse, the deputy mayor for Business and Enterprise, is charged with Boris' number 1 priority: creating jobs



Pippa Crerar gives the inside take on the team of advisers who work alongside Boris Johnson

Boris Johnson has appointed seven deputy mayors to help him run London - more even than his New York counterpart Michael Bloomberg.

The Mayor has a reputation for coming up with the ideas, but needing a little help to implement them, so he has a trusted coterie of City Hall advisers.

First among equals is Sir Edward Lister, who has a desk just outside Johnson's 8th floor office and doubles up as his Chief of Staff and Deputy Mayor for Planning. Sir Edward, who took over after Sir Simon Milton's untimely death last year, has a reputation as a safe pair of hands and quickly become known within City Hall as "Steady Eddie".

He has a long record of driving down costs – delivering the lowest council tax in the country during his 19-year reign at Wandsworth council – and is known for his Thatcherite financial discipline.

He is one of the few in the senior team on whom the Mayor relies heavily, and to whom he is unfailingly deferential.

Another highly rated adviser is Kit Malthouse, his Deputy Mayor for Business and Enterprise, who has been trusted with delivering the number one pledge of his second term – creating jobs.

The ambitious heavy-hitter, who previously ran policing for the Mayor and has a professional background in finance, once appeared destined for Parliament but is now thought to have his eye on running for City Hall himself in 2016.

He is a likeable, but occasionally brusque, City Hall operator, and does not shy away



Power behind the throne

from telling Johnson when a spade is a spade. The Mayor admires his 'can-do' attitude and straight-talking manner.

The policing role has been taken over by Stephen Greenhalgh - dubbed David Cameron's favourite councillor during his tenure leading Hammersmith and Fulham.

Despite initial misgivings from the Labour-dominated London Assembly about his lack of experience and strong political views he soon had them eating out of his hand.

He is one of the few members of the Mayor's inner team able to match him in both humour and intellect. He has a tough task ahead running the new Office for Crime and Policing during the Olympics and the inevitable cuts to follow.

After the departure of his first term 'consigliere' Guto Harri to News International, the Mayor had a gaping hole in his inner team. The arrival in July of Will Walden, who takes

as Director of Communications, will help fill that gap.

As former BBC Westminster News Editor he will know how to create headlines, but will also be expected to focus more on long-term media strategy than his predecessor. The chemistry between Walden and his new boss

“ **First among equals is Sir Edward Lister, who has a desk just outside Johnson's 8th floor office** ”

was a crucial reason for picking him – dinner at the Johnson family home was one of his key tests.

He is approachable but not afraid to stand his ground, a skill he will need when dealing with the Mayor's regular forays into the media. ➤

Johnson's official Deputy - and the person who would take over if he were run over by a London bus - is Victoria Borwick, the only Tory woman on the London Assembly.

She is well-liked by political friends and foes alike and is certain to charm her way round London on her ribbon-cutting duties.

Baroness Borwick (her husband is a Lord), a councillor at Kensington and Chelsea, is also in charge of public health, one of her personal passions.

One of the Mayor's most influential aides is Isabel Dedring, Deputy Mayor for Transport, who was brought in to "get tough" on Transport for London bosses - driving up performance and down costs across the network.

The New Yorker's level-headed approach to one of the toughest briefs is admired across City Hall, where she previously drew up Ken Livingstone's climate change strategy.

Some questions remain over whether Harvard educated Dedring is bullish enough to tackle the monolithic bureaucracy of TfL but she is rated highly by the Mayor.

The remaining deputies are first term veterans who impressed Johnson with the way they grasped their briefs as relative novices and quickly became experts.

Richard Blakeway, Deputy Mayor for Housing, Land and Property, had the unenviable task of getting the boroughs to agree to build more homes.

He has been rewarded with control over the Homes and Communities Agency London's £1.6 billion development budget and hundreds of acres of public land.

His dishevelled appearance and slightly geeky approach distract only slightly from his diligence and passion for addressing London's housing needs.

Munira Mirza, Deputy Mayor for

Education and Culture, was assiduous in steering Johnson through the minefield of arts policy and came up with the Thames Jubilee Pageant idea.

The glamorous former academic now also heads up Johnson's drive to boost literacy and promote free schools. She claims not to vote Tory but is well connected with the Right through her husband who works at CCHQ.

The Mayor's longest standing advisor, Dan Ritterband, is also one of his most loyal. He started off as Johnson's campaign chief in 2008 and joined City Hall as director of marketing and 2012 communications.

The slick former advertising man - who



also worked for David Cameron's leadership campaign - describes himself as non-party-political but would "take a bullet for Boris".

He will be key to delivering the Mayor's Olympic vision but is not expected to stick around for the rest of the second term at City Hall. He might find the allure of the Olympic gravy train — or corporate big bucks — difficult to resist.

Another bright young advisor rewarded for loyalty is Matthew Pencharz, a BBC producer before he joined Johnson's team as political link-man with the other parties at City Hall.

Since the election he has been handed the environment brief and although insiders >

“ Kit Malthouse is thought to have his eye on running for City Hall himself in 2016 ”





Boris Johnson with Barbara Windsor – his ambassador for street parties

suggest it will be a steep learning curve, they are convinced he is up to the task.

Another rising star is James Cleverly, a popular and effective Assembly member since 2008 who was Johnson's youth ambassador but overlooked for higher office.

He was tipped as statutory deputy but will have more power with his new role running the Fire and Emergency Planning Authority, where the Mayor hopes his consensual approach will help industrial relations.

A final key lieutenant is Daniel Moylan, who was de facto boss of TfL but now chairs the London Legacy Development Corporation, overseeing Olympics legacy.

An enthusiastic town planner during his time at Kensington and Chelsea council, he has been gifted the ultimate train-set.

Moylan, a canny political operator, will also continue in his role aviation adviser. Like Johnson, he isn't afraid to go head-to-head with the Government while promoting the Mayor's idea for a new hub airport in the South East.

The Mayor also has a handful of unpaid – but high profile – ambassadors to promote his special interests.

Former newspaper editor Rosie Boycott is chair of London Food, Apprentice star Tim Campbell promotes training and enterprise and Labour MP Kate Hoey is commissioner for sport.

Pop star Annie Lennox is London HIV ambassador while Eastenders legend Barbara Windsor is ambassador for street parties.

In addition, Bexley council leader Teresa O'Neill is his advisor on outer borough relations while Assembly member Richard Tracey, an environment minister under Margaret Thatcher, oversees river transport 🏰

Pippa Crerar, City Hall Editor, *Evening Standard*

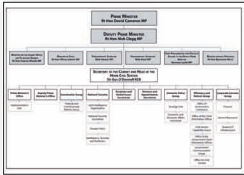


NEW Fully Updated Edition

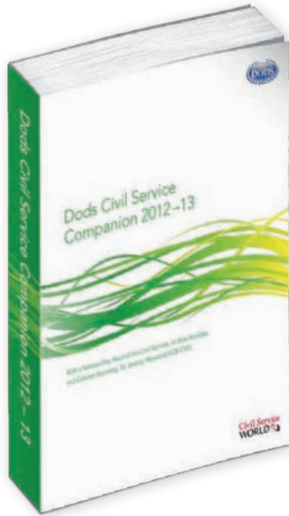
Civil Service Companion 2012-13

The most comprehensive and respected Civil Service contact directory available

Order your copy today and gain access to:



Organisation charts for every Department of State



Details of all new Permanent Secretaries and other appointments



400 biographies including the 'Top 200' decision makers and agency chiefs

Extended devolved sections for Civil Servants across the United Kingdom



PLUS

- Contact details for 4,000 Senior Civil Servants
- Over 400 Non-Departmental Public Bodies
- All Non-Ministerial Departments and Executive Agencies

Order your copy today for £230

email: order@dods.co.uk | call: 020 7593 5682 | visit: www.dodsshop.co.uk

Dods would like to thank the following organisations for their support in enabling the Guide to City Hall and the GLA to be published

Changing lives
Creating futures

